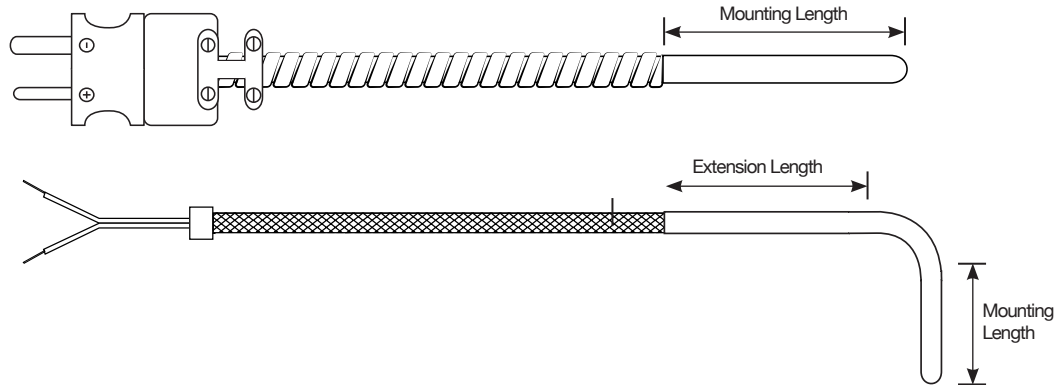




Fixed Probe Thermocouple



Fixed probe sensors can be used in drilled holes where mounting is not an issue. This type of construction can be submerged in liquids. Moisture proofing the lead exit is a popular option for immersion applications.

EX: FPK93A4M1FGR72FB1

Fixed Probe, Type K, 90 Degree Bend, 3/16" Probe Diameter, 304 SS Tube, 4.750 Mounting Length, 1.375 Extension Length, Grounded Radius Tip, 72" Fiberglass with SSOB, Spade Lugs.

1	2	3	4	5	6	7	8	9	10	11	12	13	14	15
FP														
1. Style FP														
2. Calibration	T	TD-Duplex												
	J	JD-Duplex												
	E	ED-Duplex												
	K	KD-Duplex												
3. Probe Shape	0	Straight												
	4	45 Degree bend												
	9	90 Degree bend												
4. Probe Diameter & Sheath Material	*0 = .118	*1 = .125	A = 304 S.S.											
	*2 = .156	3 = .188	B = 316 S.S.											
	*4 = .236	*5 = .250												
	*6 = .312	*7 = .375												
	*8 = .500													
	x = Special Diameter													
	* = Not available in Duplex													
5. Probe Mounting Length in inches														
6. Probe Mounting Length in fractions	A = .062	B = .125	C = .188											
	D = .250	E = .312	F = .375											
	G = .437	H = .500	J = .562											
	K = .625	L = .687	M = .750											
	N = .812	P = .875	R = .937											
	Z = 0													
7. Extension Length in inches, then use the fraction chart above for fraction code.														
8. Tip & Junction	GD = Grounded Drill													
	UD = Ungrounded Drill													
	GR = Grounded Radius													
	UR = Ungrounded Radius													
	GF = Grounded Flat													
	UF = Ungrounded Flat													
	EJ = Exposed Junction													
	OF = Open end flush tip													
9. Lead Length in inches														
10. Lead Wire Insulation	F = Fiberglass													
	T = Teflon													
	K = Kapton													
11. Lead Protection	B = Braid													
	A = Armor													
	FS = Fiberglass Sleeving													
	SS = Silicone Sleeving													
	BA = Braid/Armor													
12. Termination	0 = Split & Stripped													
	1 = Spade Lugs													
	2 = Spade Lugs/BX Fitting													
	3 = Standard Plug													
	3S = Solid Pin Plug													
	3DP = Duplex Plug													
	3T = Three Pin Plug													
	4 = Standard Jack													
	4H = Three Hole Jack													
	5 = Mini Plug													
	5T = Three Pin Mini Plug													
	6 = Mini Jack													
	6H = Three Hole Mini Jack													
	7 = Wire Ferrule													
	8 = Female Push On													
	For high temp plug or jack, add H													
	For ultra high temp plug or jack, add UH													
	For options 3-6, add X for no cable clamp (e.g. 3X, 4X)													
13. Sleeve Options Over Lead Protection	FS = Fiberglass Sleeve													
	SS = Silicone Sleeve													
	TS = Teflon Shrink													
	P = PVC Shrink													
14. Moisture Proof Probe	E = Epoxy													
	R = RTV													
15. Lead Configuration (Duplex Option)	1 = 2 Sets of Leads (Singles)													
	2 = 2 Sets of Leads under 1 protection													

Ground wire available. Add "GW" at end of part number.